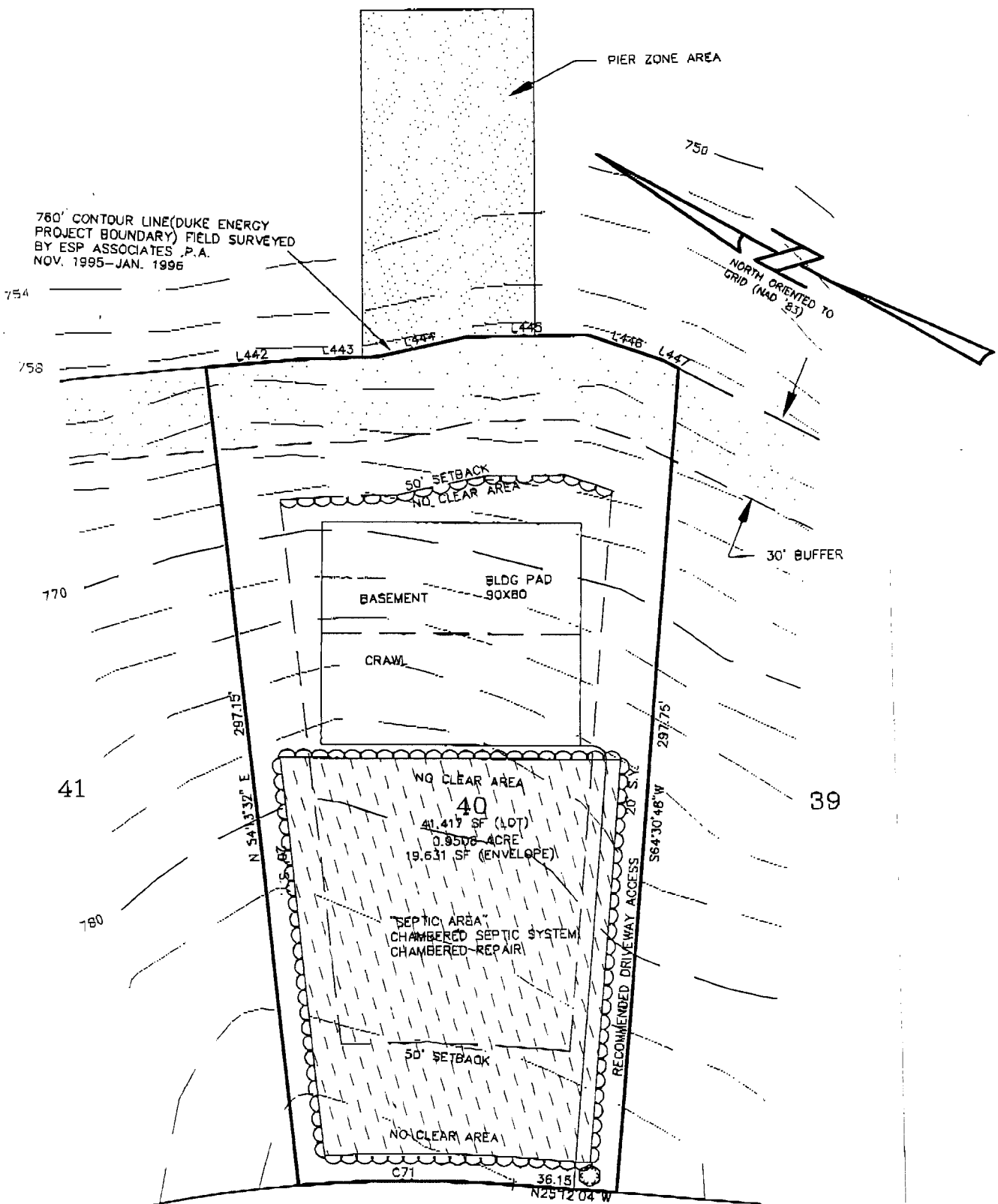




THE POINT

LINE TABLE		
LINE	BEARING	DISTANCE
L442	N34°21'51"W	32.26'
L443	S31°30'43"E	26.92'
L444	S42°14'00"E	31.69'
L445	S30°23'35"E	42.35'
L446	S10°26'33"E	27.18'
L447	N01°55'41"W	6.36'

CURVE TABLE						
CURVE	LENGTH	RADIUS	TANGENT	CHORD	BEARING	DELTA
C71	74.34	450.00	37.25	74.25	N29°56'01"W	09°27'54"



760' CONTOUR LINE(DUKE ENERGY PROJECT BOUNDARY) FIELD SURVEYED BY ESP ASSOCIATES, P.A. NOV. 1995-JAN. 1996

PIER ZONE AREA

750

NORTH ORIENTED TO GRID (NAD 83)

754

758

L442

L443

L444

L445

L446

L447

770

41

780

N 54°33' E

297.15'

S 41°37' W

20' S.Y.

S 64°30'48" W

297.75'

RECOMMENDED DRIVEWAY ACCESS

20' S.Y.

39

MAYFAIR ROAD

50' PUBLIC R/W

"Prior to constructing any pier, structure or other improvement within any pier zone shown on this plat, a permit must be obtained by the applicable lot owner from Duke Energy Corporation in accordance with the terms of the applicable Lot Purchase and Sale agreement and the Declaration of Covenants, Conditions and Restrictions for The Point."

LEGEND

- R/W=RIGHT-OF-WAY
- SSRW = SEWER R/W
- MBS = MINIMUM BUILDING SETBACK
- S.Y. = SIDE YARD
- R.Y. = REAR YARD
- PDE = PUBLIC DRAINAGE EASEMENT
- FPE = FLOOD PROTECTION ELEVATION
- ☉ = RED SUNSET MAPLE

STREET TREES TO BE PLANTED OUTSIDE OF R/W

Piers may extend from the shore for a distance of 80 feet regardless of the water depth and may extend to a maximum length of 120 feet to achieve a water depth of 10 feet, measured at full pond. In no event may a pier extend more than 1/3 of the width of the cove in which it is located. The top decking of all piers must be at least 1 foot above the water surface at full pond.

PRELIMINARY PLAT NOT FOR CONSTRUCTION RECORDATION, SALES OR CONVEYANCES

PHASE 1B LOT # 40

MAYFAIR ROAD

0.9508 ACRE (41,417 SF)

WOODED

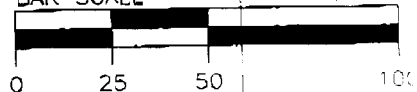
1"=50'

10/14/98

MD51BL40.DWG

BAR SCALE

1"=50'



VER # 1/20/99



ESP ASSOCIATES, P.A.
engineering • surveying • planning

1815 Southern Loop Boulevard
Pineville, N.C. (704) 583-4849